

## THE CHALLENGE



Stewart-Haas Racing, one of the premier race teams on the NASCAR Cup Series circuit, wanted to upgrade their team garage in Kannapolis, North Carolina, with high-performance equipment.

## THE SOLUTION



As the preferred service partner for Stewart-Haas Racing, MINER installed new commercial high-speed garage doors and other equipment to drive efficiency, durability and speed at their racing shop.

## THE RESULT



The new equipment streamlines access to the garage, significantly boosting the efficiency of race car servicing. With a proactive maintenance plan in place, the equipment stays in peak condition, reducing overall costs and enabling the Stewart-Haas team to concentrate on their primary goal: building championship-winning race cars.



# REVVING UP STEWART-HAAS RACING'S HOME GARAGE PERFORMANCE

**MINER<sup>®</sup> helped one of NASCAR's leading teams improve operational performance at its home base.**

Situated just outside of Charlotte, North Carolina, Stewart-Haas Racing is recognized as one of the top teams on the NASCAR circuit. A key factor in their early success has been their relentless pursuit of innovation, consistently placing their legendary drivers in optimal positions to win. This commitment led to the construction of a cutting-edge corporate garage, designed to fine-tune and store their race cars while providing pit crews with a dedicated space to perfect their skills.

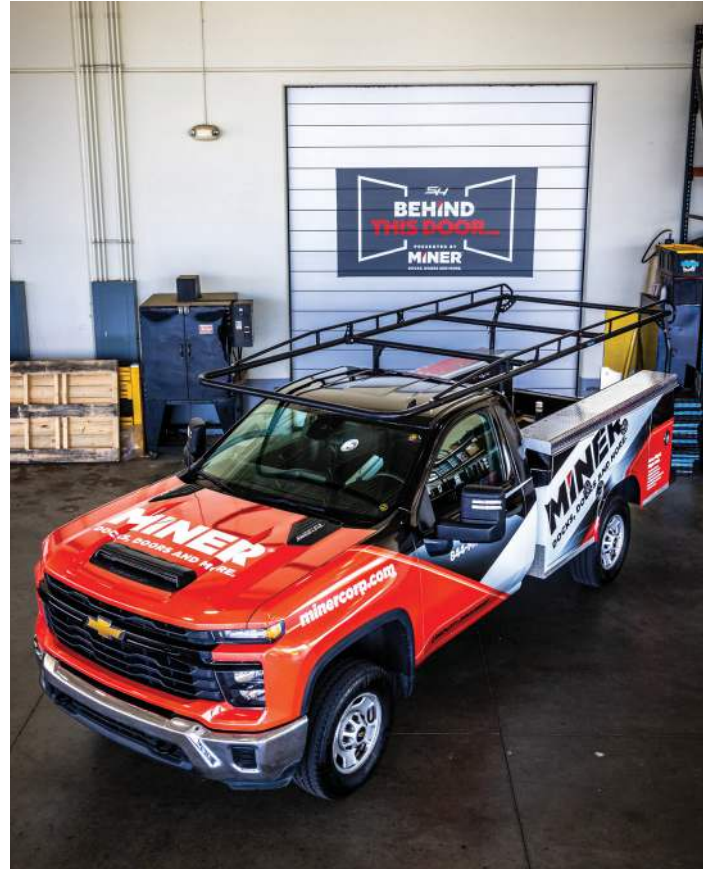
To keep the garage in optimal shape, Stewart-Haas knew they needed to upgrade its equipment for improved efficiency, durability and safety. Partnering with MINER, they developed a plan to upgrade the gates, garage and entry doors for speed and security, install barrel fans for enhanced cooling and utility savings and outsource the maintenance on the equipment so the Stewart-Haas team could focus on what it does best—winning races.

## **MAKING MINER IMPROVEMENTS FOR MAJOR GAINS**

MINER assessed the existing equipment in the garage to recommend the best upgrades with the most impact. First, they replaced the exterior garage door with a Hörmann 12-by-14-foot, high-speed door that opens in two seconds and closes in under four, allowing race cars and employees to get in and out in record time. This door improves the energy efficiency of the garage by keeping the heat out and the air conditioning in. The new doors can open and close as many as 400 times a day, traveling at 24 to 120 inches per second. The manufacturer's warranty covers the doors for 500,000 cycles, which is much higher than the national standard.

Next, MINER upgraded the team's security gates. With team haulers arriving late at night after a race, the traditional gate operators were inefficient, clumsy and didn't always work as intended. The new technology MINER selected for the gates can be operated via phone application instead of more traditional remotes and key fobs. And with a cloud-based operational system, the new gates offer improved security with the ability to easily add/remove employee access.

MINER also installed one of the industry's highest-quality rolling steel doors on the team's laser room, where the Stewart-Haas team uses 3-D laser scanners to make precision alterations to the race cars. The new Cookson door, powered by 50,000-cycle springs, keeps the research and development area off-limits to visitors.





Another upgrade focused on improving the working conditions for the pit crews as they practice their duties. MINER installed four barrel fans on columns surrounding the main work area, shooting cool air across the pit to keep the employees comfortable in the notoriously hot conditions. The fans lower the temperature as much as 10 to 15 degrees during pit practice. The addition of an Amarr 9-by-10-foot, full-view garage door was added to the practice area to allow natural light in but still provide privacy for work that is happening inside the garage.

**“MINER’s expertise in recommending and providing the best solutions for the team’s needs was obvious from day one. They did a phenomenal job.”**

**- Troy Cline**  
Head of Maintenance for Stewart-Haas Racing



Finally, MINER took the weight of door and equipment maintenance off Stewart-Haas Racing with their long-term, proactive maintenance plan. With MINER’s highly trained technicians inspecting, cleaning and maintaining the installed equipment, the Stewart-Haas garage will operate at peak performance for years to come.

With our national service programs, breadth of equipment solutions and extensive network of industry experts and service professionals, MINER offers best-in-class dock and door solutions, delivered right every time.

**Request a free quote today, and get your project started.**